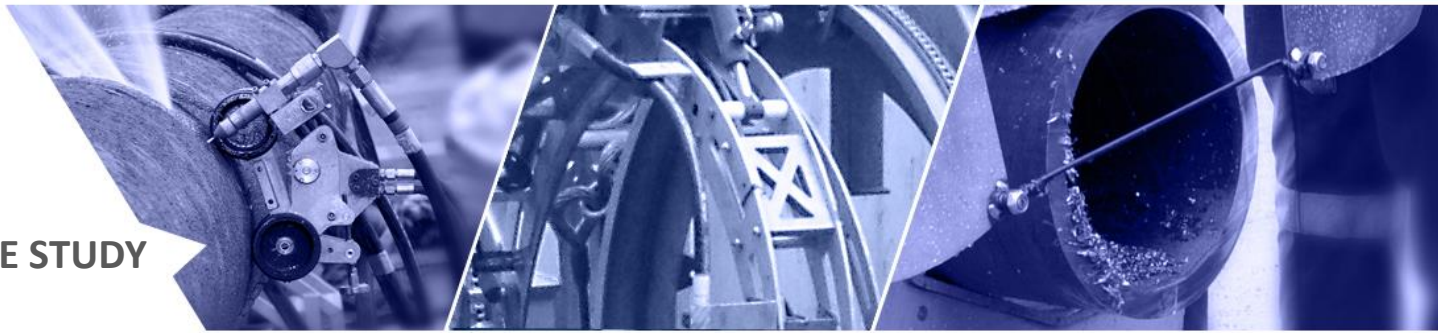


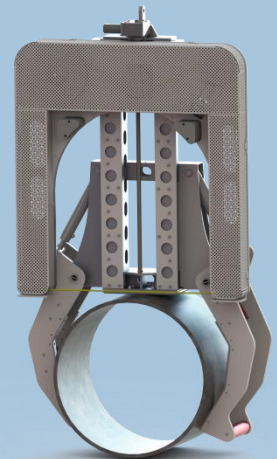
## CASE STUDY



### Overview:

After many successfully completed offshore campaigns with the UCS 42" Diamond Wire Saw, receiving an abundance of positive feed-back for reliability and functionality, UCS grows ever confident in the equipment's capabilities. Through extensive research and working very closely with Diamond Wire manufacturers with UCS providing the R&D and specifications, a UCS Specific Diamond Wire has been commissioned. This wire has proved to provide the best results for UCS to date. As UCS is a firm believer in continual improvement of both services and equipment, the latest R&D trials conducted were to determine the optimum Diamond Wire Saw Set up i.e. Hydraulic Flows / Pressures / RPM, coupled with the best diamond wire for cutting multi pipe in pipe operations

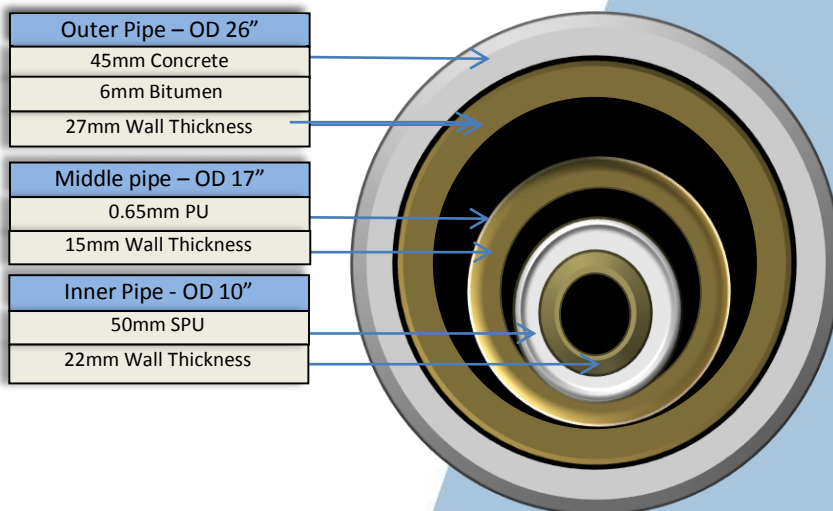
With the above in mind UCS wanted to really push the equipment during this R&D process and as such set out the following multi-string test product.



### Test Set Up:

#### Multi String Product Specifics

String No	Material	WT	Pipe OD	Coating		Product OD
				Type	Thickness	
1 (Outer)	Stainless Steel	25mm	24"	Concrete	45mm	26"
2 (Middle)	Stainless Steel	15mm	17"	PU	0.65mm	17"
3 (Inner)	Stainless Steel	22mm	10"	SPU	50mm	10"



#### Cutting Equipment Utilised

42" Diamond Wire Saw

#### Required Supporting Equipment

Hydraulic Power Unit

Hydraulic Umbilical Reel (Twin Line)

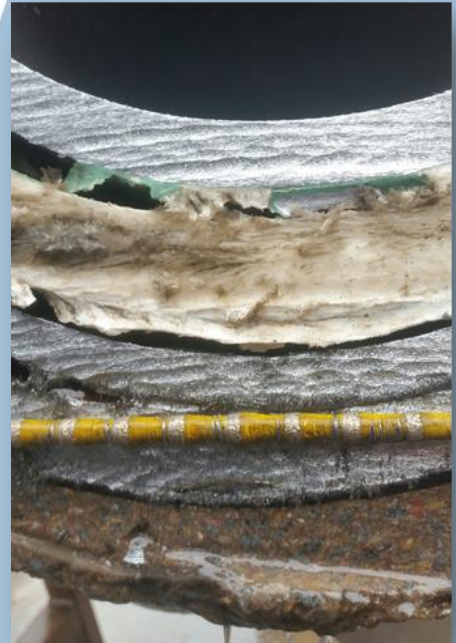
## CASE STUDY

### Trial Test Results:

Trial Test was conducted on 8th of September 2014 at UCS premises in Inverurie. The Diamond wire saw performed with great results completing the cut on the first attempt without any concerns.

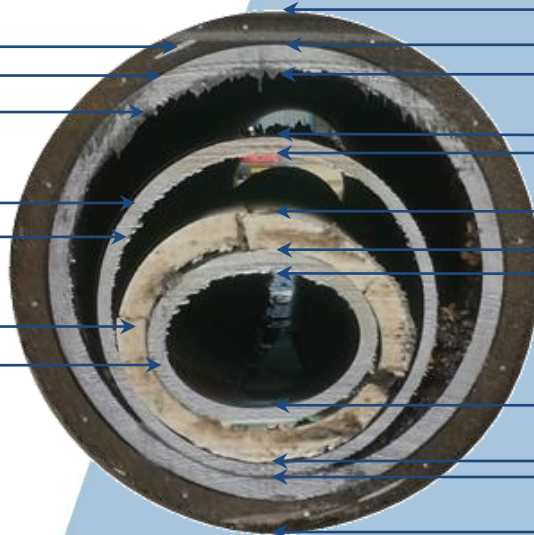
#### TOTAL CUTTING TIME

46mins and 45secs in one continuous cut.



### Cutting Time Breakdown:

<b>Outer Pipe – OD 26"</b>
45mm Concrete
6mm Bitumen
27mm Wall Thickness
<b>Middle pipe – OD 17"</b>
0.65mm PU
15mm Wall Thickness
<b>Inner Pipe - OD 10"</b>
50mm SPU
22mm Wall Thickness



- Start cut 15:16 - 0mins
- Touching metal pipe 15:20 - 4mins 5sec
- Through wall 15:23 - 6mins 30sec
- Touching wall 15:25 - 8mins 30secs
- Through wall 15:28 - 11mins 30secs:
- Touching coating 15:32 - 15mins 50secs:
- Touching pipe 15:35 - 18mins 40secs:
- Through pipe 15:39 - 21mins 22secs:
- Touching pipe 15:53 - 35mins 40secs:
- Touching pipe 15:58 - 39mins 25secs:
- Touching pipe 16:00 - 44mins 40secs:
- Cut 100% complete 16:03 - 46mins 45secs: